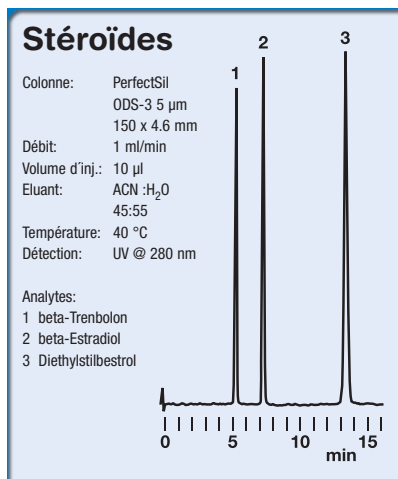


PerfectSil®

La Haute Qualité, par MZ-Analysentechnik



- ➔ disponible en tailles de pores 100 et 120 Å
- ➔ haute reproductibilité
- ➔ grande variété de chimies disponibles
- ➔ excellente stabilité chimique et mécanique
- ➔ chaque colonne est testée individuellement
- ➔ bien implantée dans de nombreux laboratoires
- ➔ utilisation d'une silice de haute pureté: > 99,999 %
- ➔ particules sphériques avec une faible polydispersité
- ➔ procédure de fabrication ISO 9001
- ➔ refill-service



| PerfectSil™ | | Données Techniques | | | | | | |
|-------------------------|------|--------------------|--------------|-----------------------|--------------|--------------|------------------|------------|
| Chimie | Code | Taille particules | Taille pores | surface | Volume pores | Taux carbone | Pureté-de silice | end-capped |
| PerfectSil 100 Sil | 0705 | 5 µm | 100 Å | 450 m ² /g | 1,05 ml/g | - | 99,999 | - |
| PerfectSil 100 ODS-3 | 0710 | 5 µm | 100 Å | 450 m ² /g | 1,05 ml/g | 19,0 % | 99,999 | + |
| PerfectSil 100 C8-3 | 0715 | 5 µm | 100 Å | 450 m ² /g | 1,05 ml/g | 9,0 % | 99,999 | + |
| PerfectSil 100 Phenyl-3 | 0735 | 5 µm | 100 Å | 450 m ² /g | 1,05 ml/g | 9,5 % | 99,999 | - |
| PerfectSil 100 NH2 | 0720 | 5 µm | 100 Å | 450 m ² /g | 1,05 ml/g | 8,0 % | 99,999 | - |
| PerfectSil 100 CN-3 | 0725 | 5 µm | 100 Å | 450 m ² /g | 1,05 ml/g | 14,0 % | 99,999 | - |
| PerfectSil 100 Diol | 0730 | 5 µm | 100 Å | 450 m ² /g | 1,05 ml/g | - | 99,999 | - |
| PerfectSil 120 Sil | 1410 | 5 µm | 120 Å | 300 m ² /g | 1,00 ml/g | - | 99,999 | - |
| PerfectSil 120 ODS | 1421 | 3 µm | 120 Å | 300 m ² /g | 1,00 ml/g | 15,0 % | 99,999 | + |
| PerfectSil 120 ODS | 1420 | 5 µm | 120 Å | 300 m ² /g | 1,00 ml/g | 15,0 % | 99,999 | + |
| PerfectSil 120 ODS | 1400 | 10 µm | 120 Å | 300 m ² /g | 1,00 ml/g | 15,0 % | 99,999 | + |
| PerfectSil 120 ODS-L | 1675 | 3 µm | 120 Å | 300 m ² /g | 1,00 ml/g | 13,0 % | 99,999 | + |
| PerfectSil 120 ODS-L | 1680 | 5 µm | 120 Å | 300 m ² /g | 1,00 ml/g | 13,0 % | 99,999 | + |
| PerfectSil 120 ODS-2 | 1424 | 5 µm | 120 Å | 300 m ² /g | 1,00 ml/g | 17,0 % | 99,999 | + |
| PerfectSil 120 ODS-2 | 1425 | 5 µm | 120 Å | 300 m ² /g | 1,00 ml/g | 17,0 % | 99,999 | + |
| PerfectSil 120 C1 | 1429 | 3 µm | 120 Å | 300 m ² /g | 1,00 ml/g | 5,0 % | 99,999 | - |
| PerfectSil 120 C1 | 1430 | 5 µm | 120 Å | 300 m ² /g | 1,00 ml/g | 5,0 % | 99,999 | - |
| PerfectSil 120 C4 | 1435 | 5 µm | 120 Å | 300 m ² /g | 1,00 ml/g | 8,0 % | 99,999 | + |
| PerfectSil 120 C8 | 1441 | 3 µm | 120 Å | 300 m ² /g | 1,00 ml/g | 11,0 % | 99,999 | + |
| PerfectSil 120 C8 | 1440 | 5 µm | 120 Å | 300 m ² /g | 1,00 ml/g | 11,0 % | 99,999 | + |
| PerfectSil 120 C8 | 1442 | 10 µm | 120 Å | 300 m ² /g | 1,00 ml/g | 11,0 % | 99,999 | + |
| PerfectSil 120 NH2 | 1446 | 3 µm | 120 Å | 300 m ² /g | 1,00 ml/g | 4,0 % | 99,999 | - |
| PerfectSil 120 NH2 | 1445 | 5 µm | 120 Å | 300 m ² /g | 1,00 ml/g | 4,0 % | 99,999 | - |
| PerfectSil 120 Phenyl | 1448 | 5 µm | 120 Å | 300 m ² /g | 1,00 ml/g | 9,5 % | 99,999 | - |
| PerfectSil 120 Phenyl-M | 1449 | 5 µm | 120 Å | 300 m ² /g | 1,00 ml/g | 6,0 % | 99,999 | - |

| L x D.I. en mm | 3 µm | | 5 µm | |
|-------------------|--------|--------|--------|--------|
| | New | Refill | New | Refill |
| 50 x 2,1 mm | 229,-- | 181,-- | 181,-- | 133,-- |
| 100 x 2,1 mm | 295,-- | 247,-- | 226,-- | 178,-- |
| 125 x 2,1 mm | 301,-- | 253,-- | 250,-- | 202,-- |
| 150 x 2,1 mm | 318,-- | 270,-- | 265,-- | 218,-- |
| 200 x 2,1 mm | 338,-- | 293,-- | 280,-- | 235,-- |
| 250 x 2,1 mm | 361,-- | 310,-- | 292,-- | 241,-- |
| 50 x 3,0 mm | 199,-- | 166,-- | 175,-- | 142,-- |
| 100 x 3,0 mm | 226,-- | 191,-- | 199,-- | 163,-- |
| 125 x 3,0 mm | 235,-- | 196,-- | 205,-- | 166,-- |
| 150 x 3,0 mm | 247,-- | 208,-- | 218,-- | 179,-- |
| 200 x 3,0 mm | 270,-- | 229,-- | 223,-- | 182,-- |
| 250 x 3,0 mm | 286,-- | 241,-- | 232,-- | 187,-- |
| 20 x 4,0 mm | 178,-- | 152,-- | 136,-- | 111,-- |
| 33 x 4,0 mm | 196,-- | 168,-- | 151,-- | 122,-- |
| 40 x 4,0 mm | 211,-- | 185,-- | 162,-- | 136,-- |
| 50 x 4,0 mm | 222,-- | 192,-- | 171,-- | 140,-- |
| 60 x 4,0 mm | 232,-- | 200,-- | 178,-- | 146,-- |
| 75 x 4,0 mm | 241,-- | 208,-- | 185,-- | 152,-- |
| 100 x 4,0 mm | 250,-- | 216,-- | 193,-- | 159,-- |
| 125 x 4,0 mm | 259,-- | 223,-- | 199,-- | 163,-- |
| 150 x 4,0 mm | 267,-- | 229,-- | 205,-- | 179,-- |
| 200 x 4,0 mm | 283,-- | 246,-- | 218,-- | 180,-- |
| 250 x 4,0 mm | 298,-- | 260,-- | 228,-- | 191,-- |
| 300 x 4,0 mm | 338,-- | 287,-- | 261,-- | 211,-- |
| 20 x 4,6 mm | 188,-- | 162,-- | 146,-- | 120,-- |
| 33 x 4,6 mm | 206,-- | 178,-- | 159,-- | 131,-- |
| 40 x 4,6 mm | 222,-- | 196,-- | 172,-- | 146,-- |
| 50 x 4,6 mm | 233,-- | 202,-- | 180,-- | 149,-- |
| 60 x 4,6 mm | 245,-- | 213,-- | 188,-- | 156,-- |
| 75 x 4,6 mm | 254,-- | 221,-- | 196,-- | 163,-- |
| 100 x 4,6 mm | 263,-- | 229,-- | 203,-- | 169,-- |
| 125 x 4,6 mm | 272,-- | 236,-- | 211,-- | 175,-- |
| 150 x 4,6 mm | 281,-- | 243,-- | 218,-- | 180,-- |
| 200 x 4,6 mm | 298,-- | 260,-- | 230,-- | 193,-- |
| 250 x 4,6 mm | 312,-- | 274,-- | 241,-- | 203,-- |
| 300 x 4,6 mm | 340,-- | 289,-- | 289,-- | 239,-- |

Numéro de commande

longueur [mm] D.I. [mm] code du matériel N: New, R: Refill

Exemple: 250.4.6.1421.N
Colonne HPLC (new)
250 x 4,6 mm
PerfectSil 120 ODS
5 µm